

1

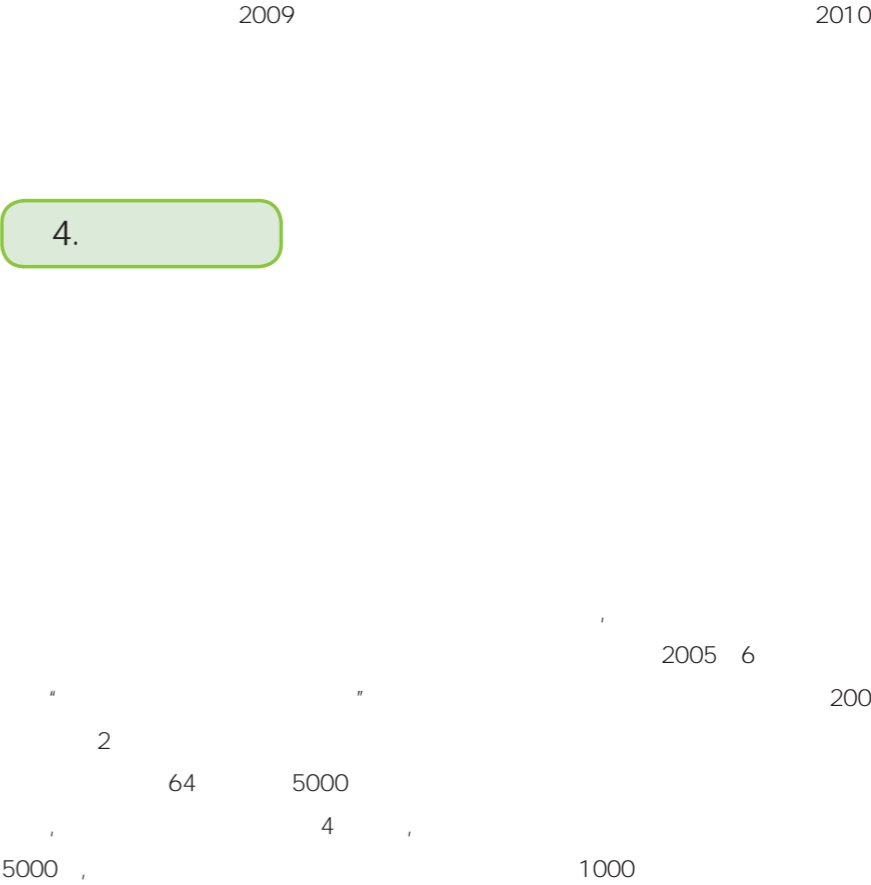
2	30	2012	5	3.7%	0.37	1.9%
1/2	1/5	2020			8	5
	0.15		1/4	21.63%	11.20	9
1/7		8.99				13%
	59%	63%	67%			
				50%		
	35%	20%	29%	50%		
2020					"	"
	GDP	1			0.61	
	4.58%					







3.



4.

()

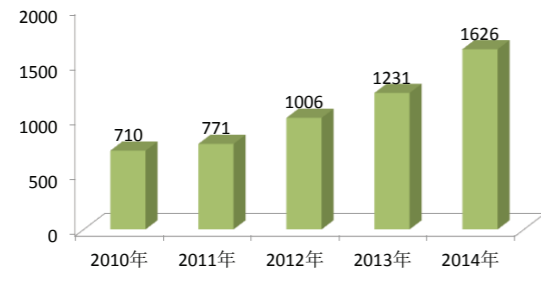
2013 11 11

5.

2014 2014 1007 2015 1 15 1626
6

1.

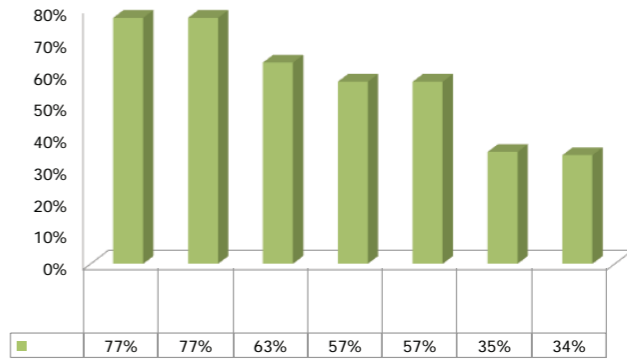
2013 1231 2014 1526 24.0% 1007
404 40.1%
608 60.4% 758
75.3%
22



5

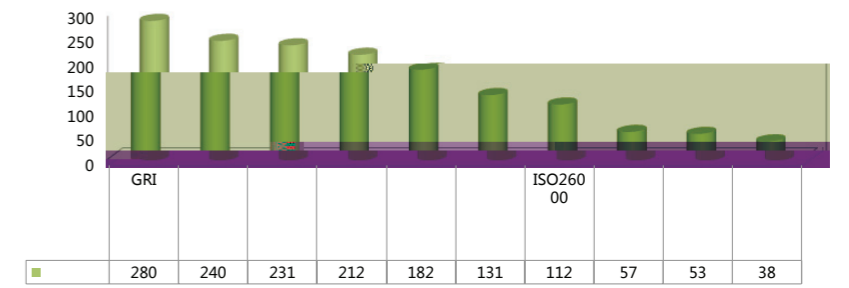
2.

2014 2013 31.8 34.5
34.9% 33.9% " "
77.0% 62.7% 57.1%
56.9%

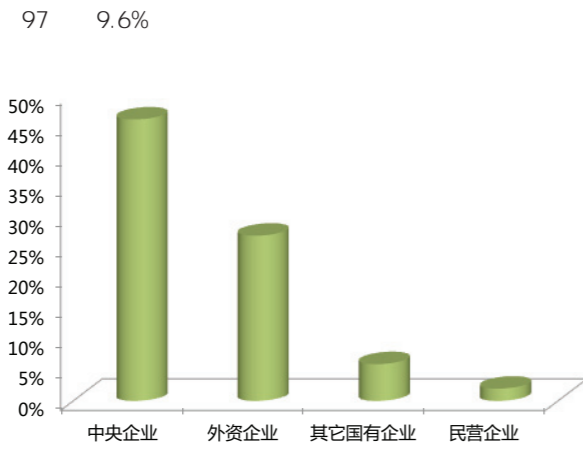


3.

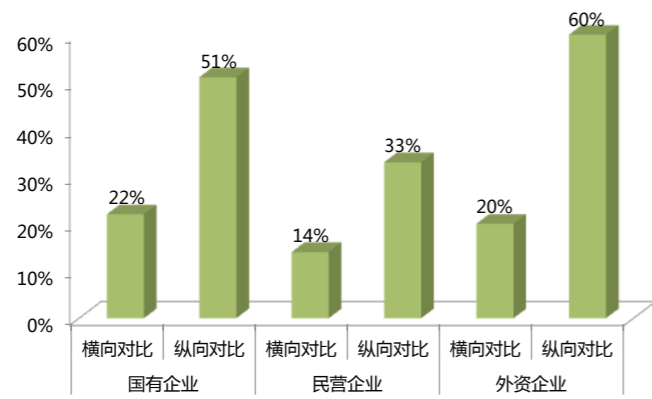
2014 681 67.6% 456
GRI 280 240 231
143 14.2% 61 54 26
18
2014 6



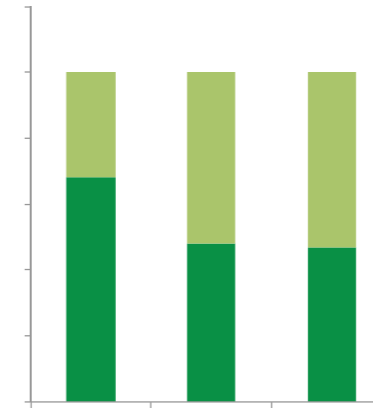
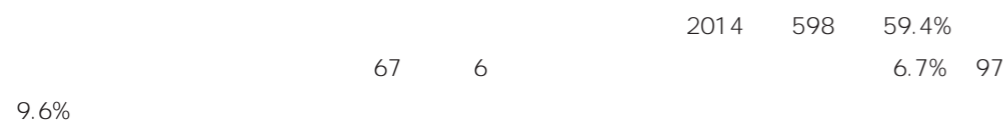
4.



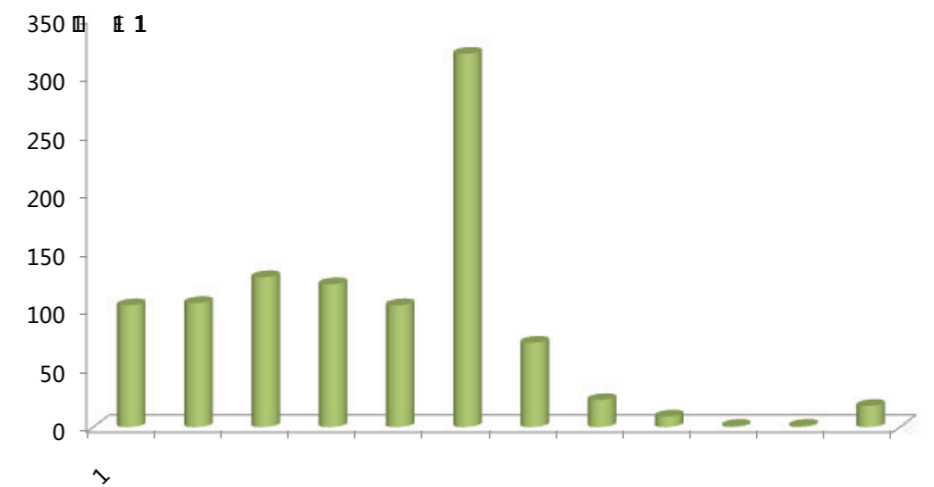
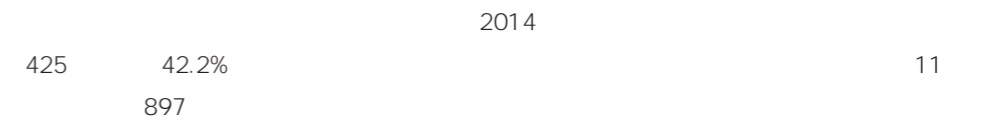
5.



6.

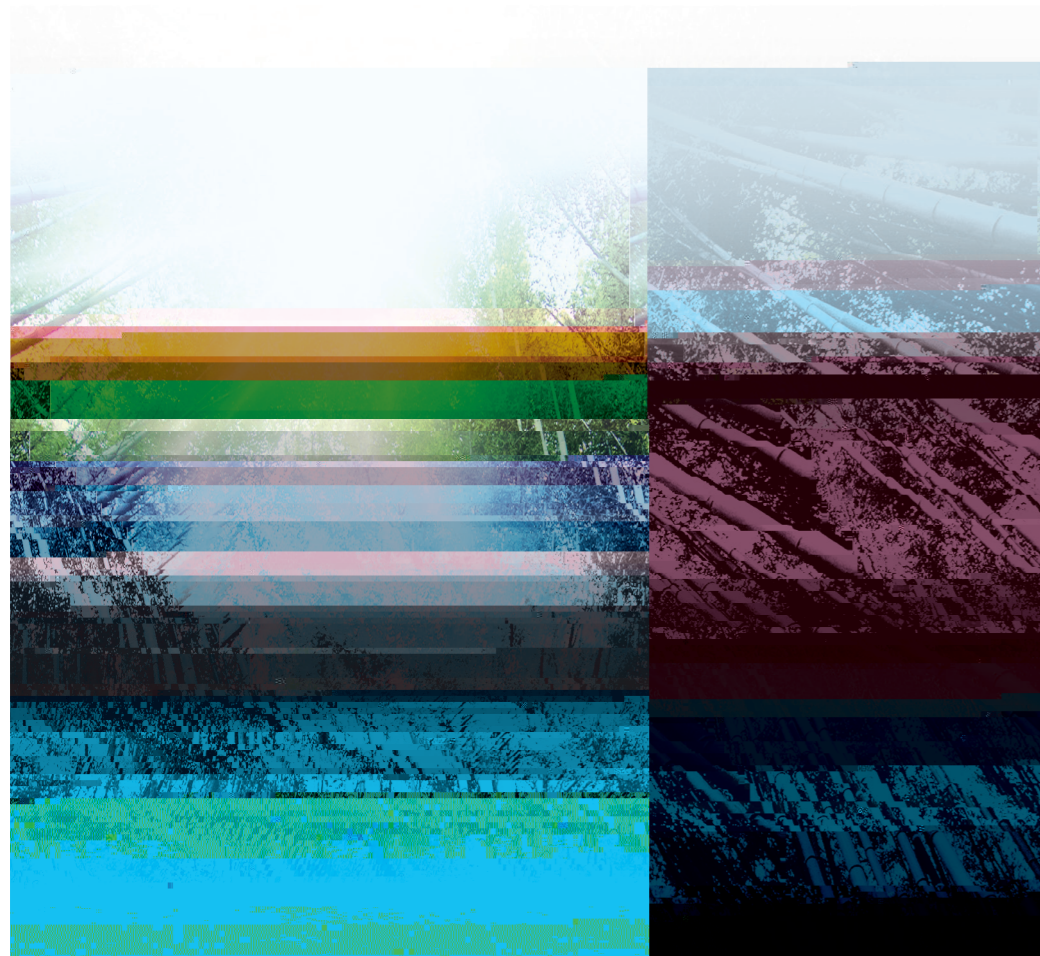


7.



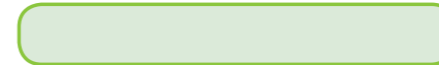


6.



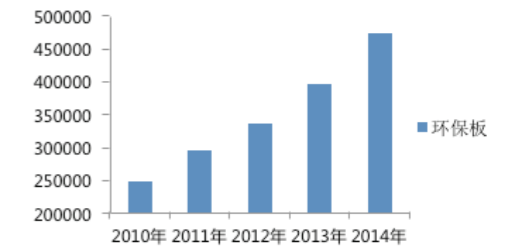
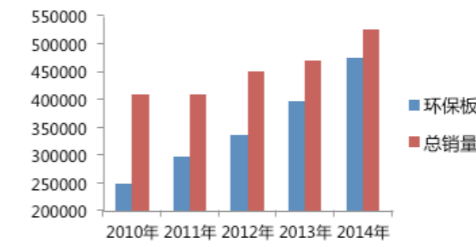


2014	2013	2013
42.1%	15.1%	32.9%
	26826000	42.2%
2014	22872000	





	2010	2011	2012	2013	2014
F	25828	34636	46057	65050	93854
CARB 2	0	21377	30892	48921	68538
E1	222274	240265	259466	283515	301537
m ²	248102	296278	336415	397486	474229
m ²	408205	408205	449568	468680	526581
%	60.78%	72.58%	74.83%	84.81%	90.06%



60 /

2014

AA



2014

100%



2015 F 30000

2014 E1 CARB





2014 10 24

230

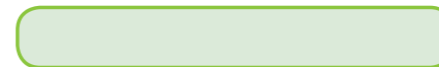
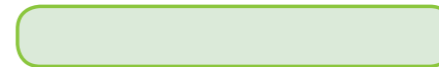
9

480

92

40

63





3

100%



2014 " " " " 10

" " " " "

" " " " "

1.

2014 " "

" " " " "

" " " " "

" " " " "



2.

2014
6100

3.

2014

5000

6000





2014

" " " "

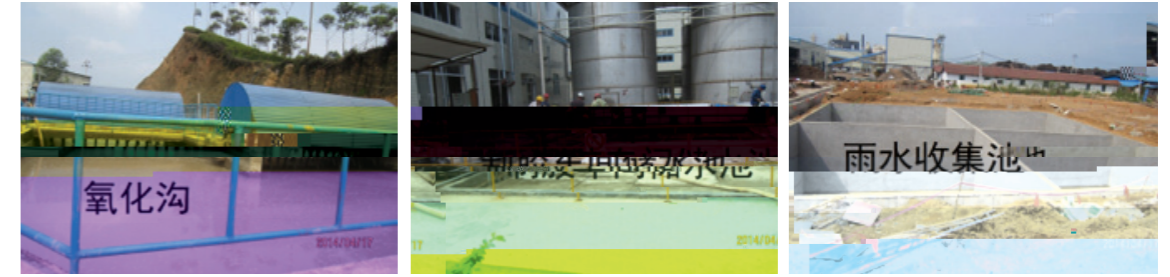
1996

20

() 5 7

" " FSC-COC CARB

2014



1. " "

4 " "
0551 " " 80

T



0551 " "
0551 " "

" " "
" "

2. " "



2014 9 23 " "

" " 2013

2013 6

5000

15

2013

" " " " " "

2015 6

" " " " " "

" " " " " " " "



2001 - 2005	28	200	9	2
2006 - 2010	2	2	2	2
2008	2000	2010	5000	
2011 - 2015	2	1000		

1

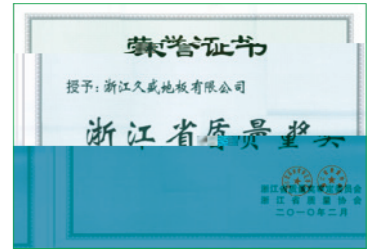
ISO 9001 ISO 14001 ISO 14025

1000	24
4D	
30	

8

2

2014	"	"	" 863"	4
"	"	1	1	90
17		14		



1

2005

90%

2006

2

" 1+1 "



5

3

- 1
- 2
- 3
- 4
- 5
- 6
- 7

15%

KPI



6

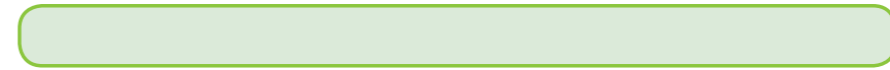
60%

4.

ISO 14001

GB/T 18000

100%



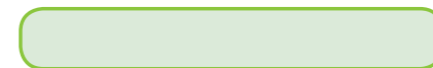
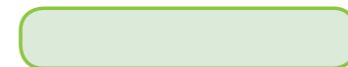
WEB

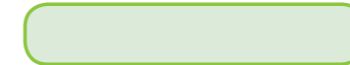
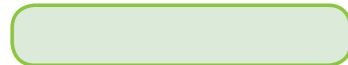
WEB

*

H

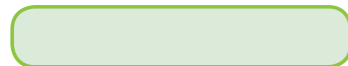
f f f f f f f f f f





2007-2009	6,000		116
2010		"	"
2014	7		1146

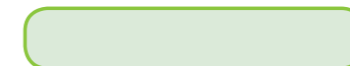
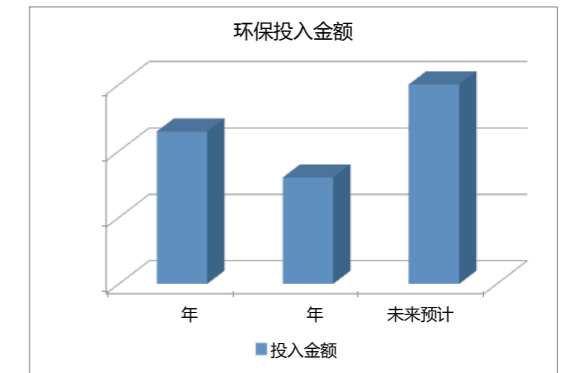
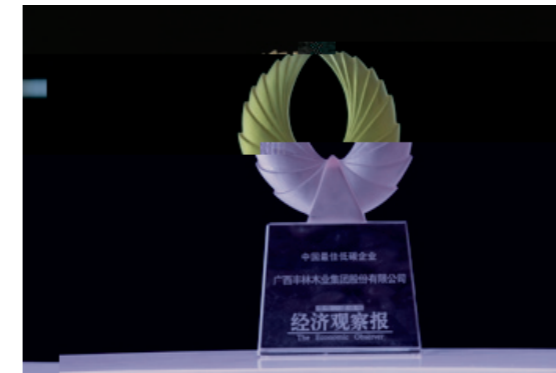
2013 272 A 28.5%



15 M³ 2014 3 1 2013 11 75%

4

	2011	2012	2013	2014
	17.37	17.00	19.97	20.33
	15.23	15.69	16.99	17.57
	8.86	8.57	9.03	11.99
	0.83	0.70	0.91	0.83
	15.23	15.69	16.37	16.92
	0.22	0.15	0.19	0.18
	2,345	2,345	2,813	2,813
	12.34%	7.70%	13.74%	13.59%

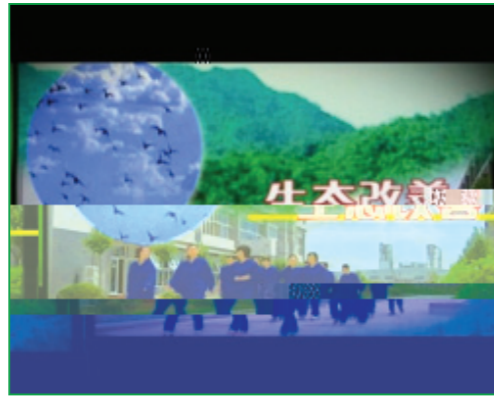
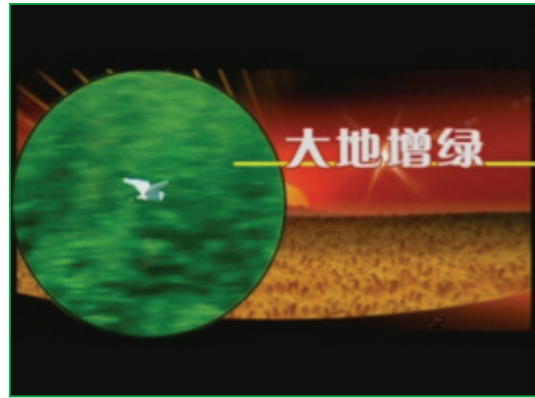


2014 9 FSC

20

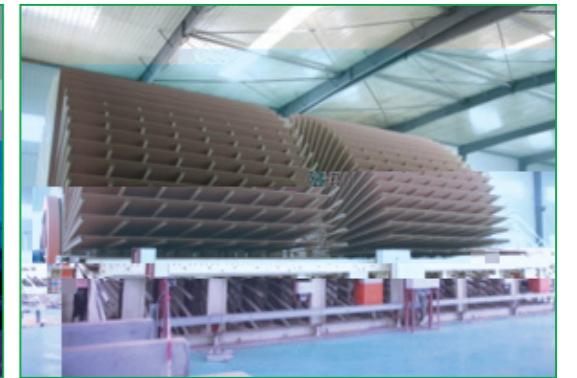
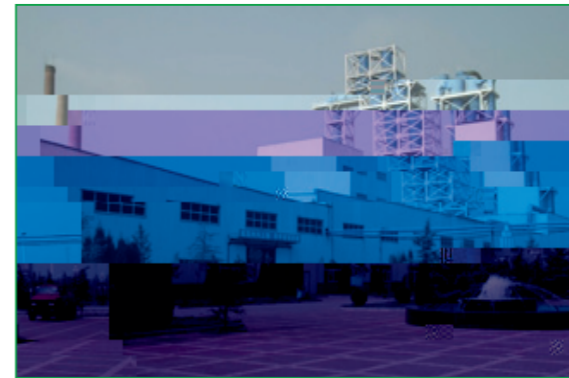
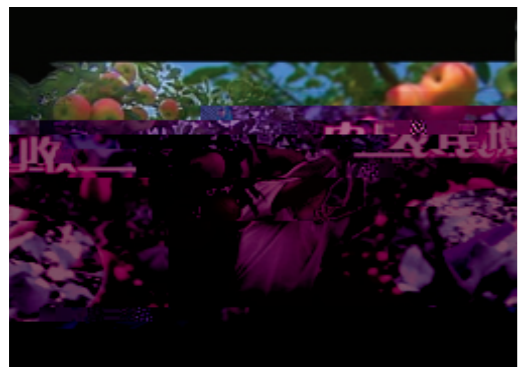
19





3

2.6



4

" "

m³

350

65

10

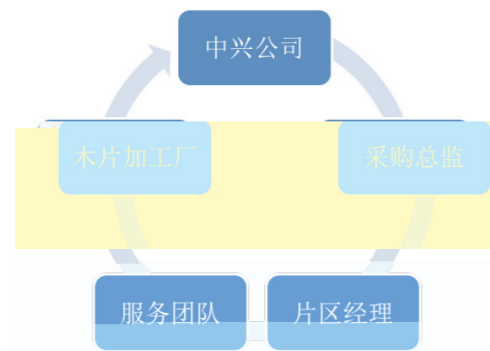
6000

42

" "

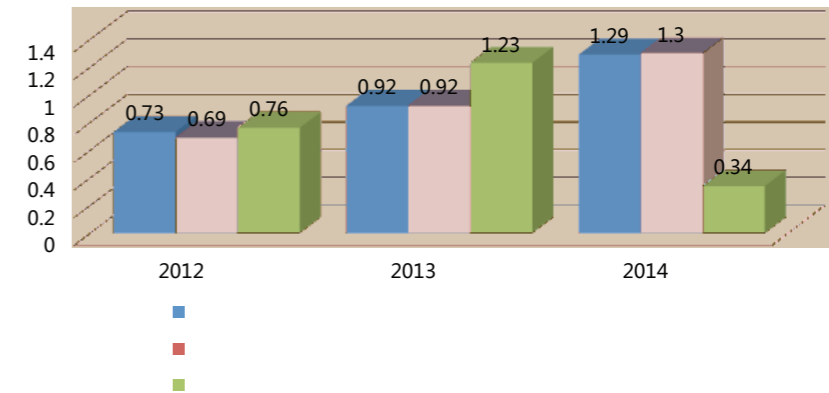
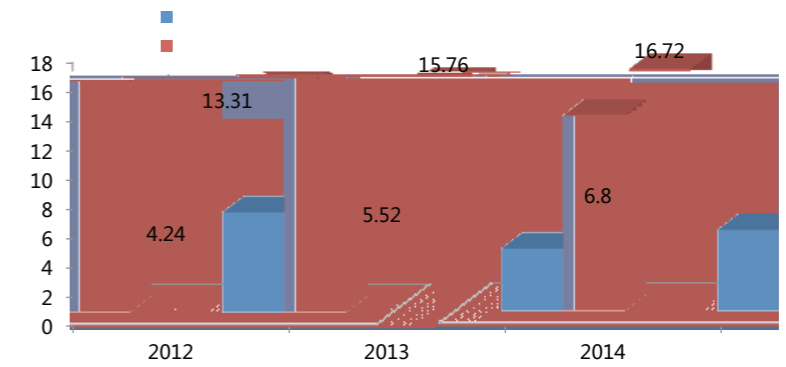
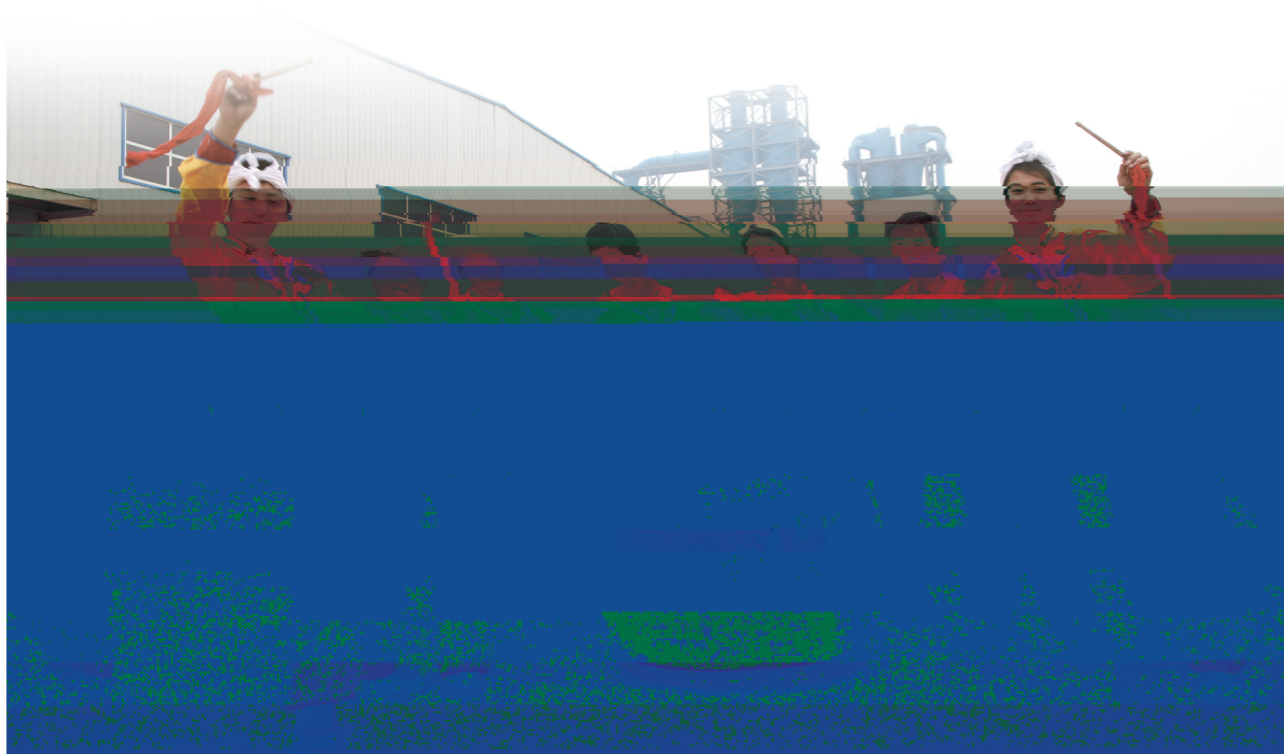
" "

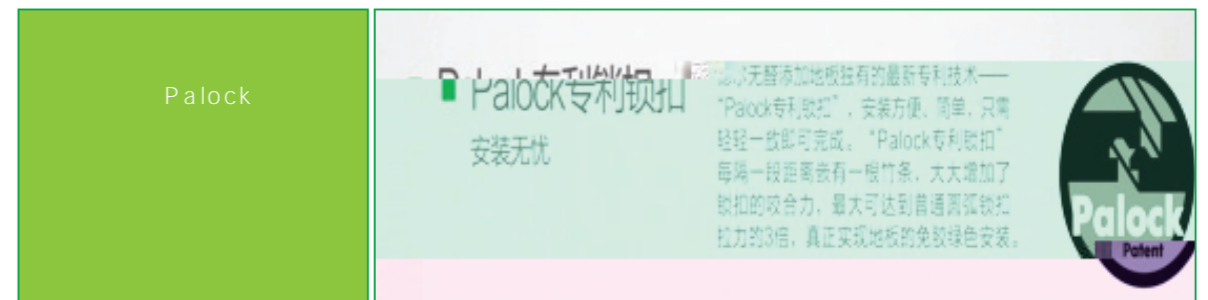
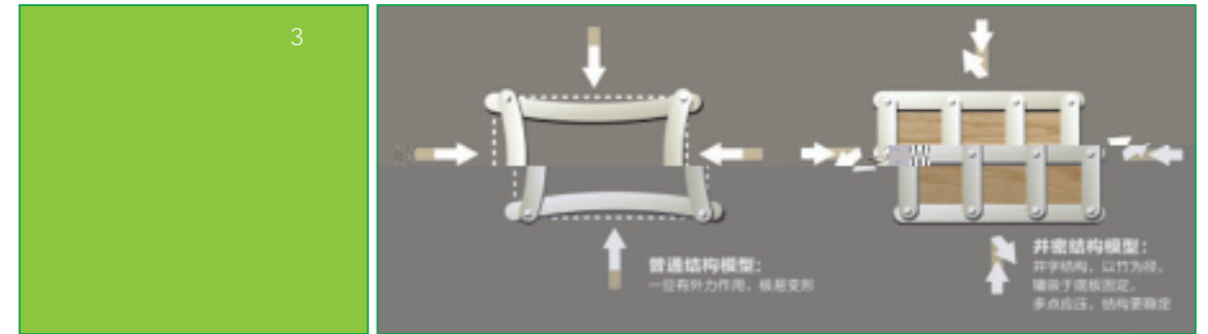
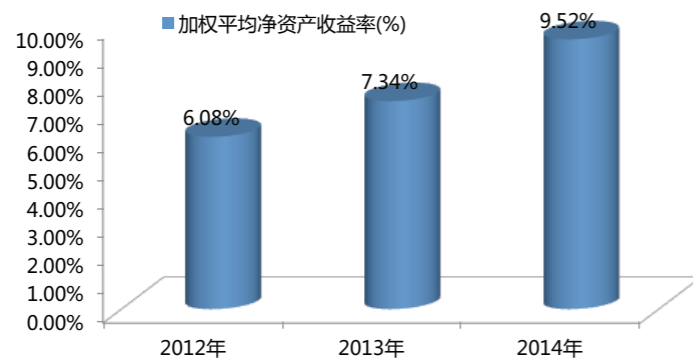
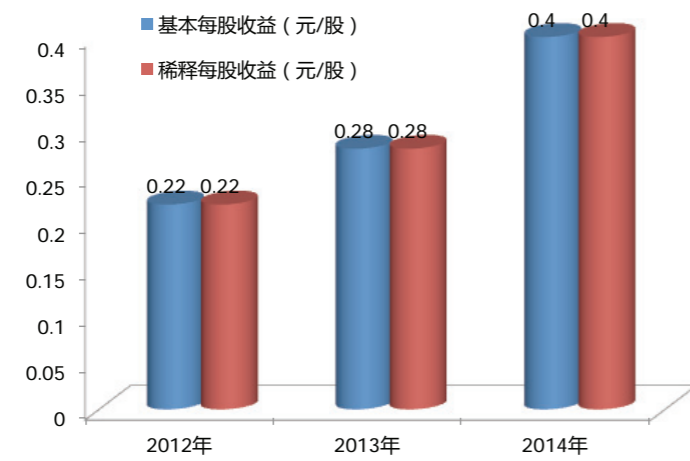
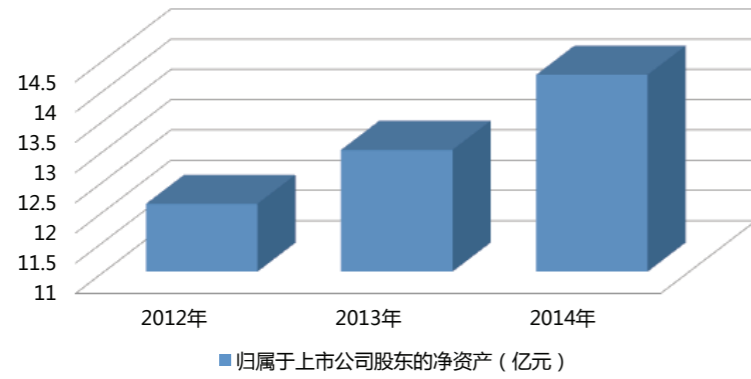




2014

18







" " " "

2006 " " " "

" " " "



" " " "



2014 3 15 " " " "

" " " "

" " " "

" " " "



150



90

5

5000

70%



CBA



1

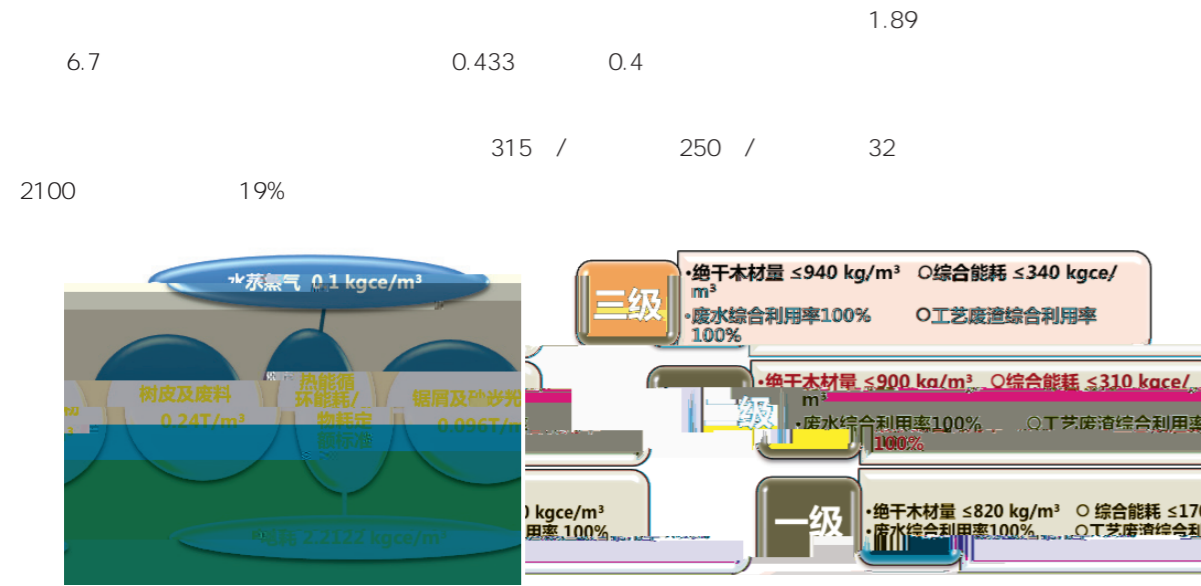
	2011 - 2015	2011 - 2020
	HJT 315- 2006	HJT 315- 2006
	1 2	1 2

2

100

37

COD



3.

EWK

WESP

2014 11 23

EWK



WESP

WESP

	3	3	3	3
/	3	3	3	3
	9	9	9	9
mg/Nm ³	99.5	23.6	38.8	0.5
mg/Nm ³	120	25	120	100
mg/Nm ³	50	15	70	10
mg/Nm ³	5	15	30	0.5

GB16297-1996

2014



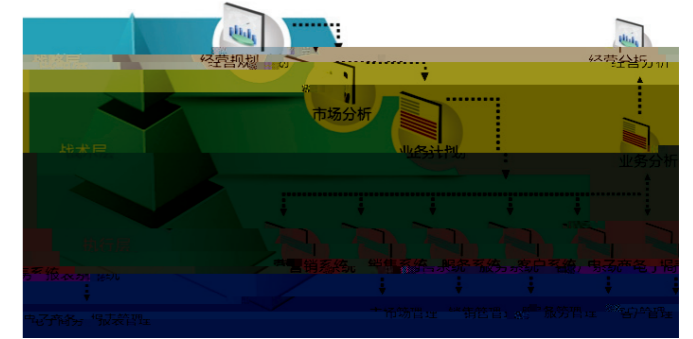
CRM

CRM

2013 10

TATA

2014 4



2014



2014

23

CRM

Customer Relationship Management

CRM

CRM

CRM

2014 1 CRM

KPI

CRM

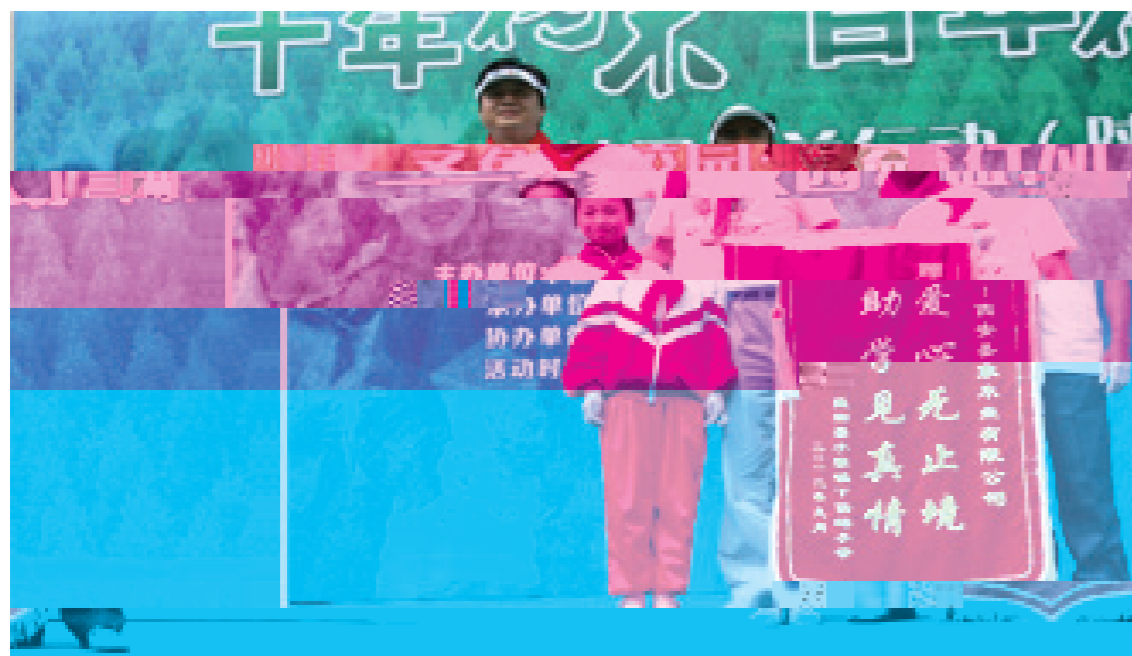
CRM

80%

2006	"	"			
2007	"	"	5		
2007 7 25			50		
	49				
2008	"	"			
			5		
2008	"	"		7	
2008 5			700		
				5 26	
2010 4	"	"			
2006	20		2013		
			150		

2.

	"	"			
	"	"			
2011 11 4	"	"			
			2011		
			50		
2012	"	"			
2012	"	"			
2012	"	"			
2012	"	"			
2013	"	"			
2013	"	"			





IS 09001

(CIMS)

()

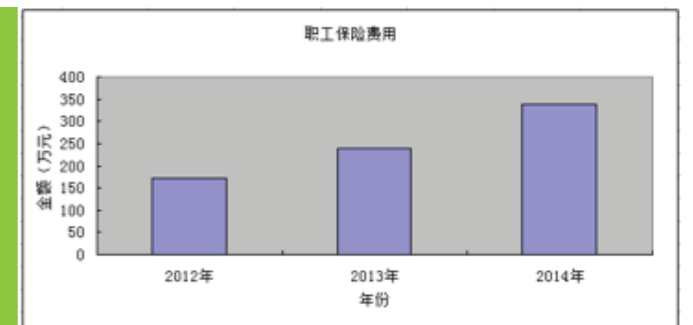
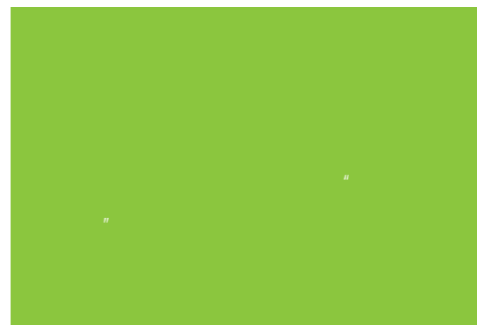
100

2014

CARB

CARB P2

F4





		2004	11	19	17264		
					/		
					50		
2000	6000	6000					15



5

971

1	()
2	
3	
4	
5	
6	
7	
8	
9	
10	
11	
12	
13	
14	
15	
16	
17	